

CATALOG 2026

Ordinary needs. *Extraordinarily met.*

Armal

Armal

ABOUT US

Armal S.p.A. is a global leader specializing in the research and development of innovative solutions for the Portable Sanitation Industry. Founded in 1987, Armal began with a production facility in Italy and expanded to the U.S. in 2005. Once a family-run business, it now belongs to a global group focused on innovation and investment in portable sanitation. With two production facilities, Armal exports to over 130 countries worldwide.

Armal offers a wide range of innovative products, including:

- **CLASSIC LINE:** Self-contained and mains-connected, UV-resistant high-density polyethylene restrooms, cabins, and accessories.
- **E-LINE:** Electronic portable restrooms and sanitary modules.
- **FREE-STANDING LINE:** Hand wash stations, urinals and safety barrier.
- **SERVICE EQUIPMENT LINE:** Vacuum tank units.
- **DEODORIZERS & CLEANING SOLUTIONS LINE:** Traditional deodorizers and care products.

With advanced injection molding technology and efficient logistics, Armal ensures rapid production—up to 230 polyethylene portable restrooms daily in Italy and 127 in the U.S.—making it a trusted partner for emergency response and large-scale operations. High-quality materials, strict quality control, and optimized packaging help reduce costs and lead times while maintaining product reliability and performance.

KEY STRENGTHS



PREMIUM QUALITY & INNOVATION

High-quality products and innovative solutions tailored to customer needs.



HIGH PRODUCTION CAPACITY

Advanced technology and a skilled, efficient workforce enable large-scale manufacturing with consistent quality.



DURABLE MATERIALS

Engineered for exceptional strength, impact resistance, and long-term durability—even in extreme weather and temperature conditions.



COMMITMENT TO SAFETY & SUSTAINABILITY

Armal designs its products to meet the highest environmental and safety standards.



LEAN MANAGEMENT

Since 2021, Armal has adopted Lean Management to optimize workflows and enhance overall performance. This strategic approach supports continuous improvement, increases competitiveness, streamlines operations, and reduces non-value-added activities—ultimately delivering greater value to customers.



SUSTAINABILITY

To minimize the environmental impact associated with its products, Armal's portable restrooms and cabins:

- **Are made with homogeneous and high-level recyclable materials** (mainly HDPE) and very few metallic pieces.
- **Designed for reduced water usage:** innovative technical solutions allow each flush to use less than 1 liter of fresh water, significantly lower than the 7–10 liters required by standard domestic toilets.
- **Operate with very low energy consumption:** the roof of Armal cabins is translucent to let in natural light, while their internal mechanism (when present) works mechanically avoiding the use of electricity.
- **Provide a service at low environmental impact:** Armal offers a line of vacuum tank units that combines water savings, the reduced use of sanitary concentrate and the restroom grey water collection.
- **Are designed to be completely dismantled** at the end of their life cycle.
- **In line with the principles of the circular economy,** production waste is reintroduced into the manufacturing cycle in order to reduce the amount of virgin polymers used.

Armal has always been working with a sustainable approach investing significantly in research and development activities aligned with an innovative and responsible corporate mindset.

CERTIFICATES & CODE OF ETHICS

Armal's commitment to sustainability is cross-functional and involves all areas of the company. For this reason, it has adopted a Code of Ethics, which is complemented by an Organizational, Management and Control Model, as well as a Whistleblowing System for reporting misconduct. Furthermore, through a Certified Management System for:



QUALITY (ISO 9001:2015)



ENVIRONMENT (ISO 14001:2015)



HEALTH AND SAFETY (ISO 45001:2018)



GENDER EQUALITY (UNI PDR 125:2022)

Armal continuously optimizes its processes according to the established standards.



APPLICATION FIELDS



EVENTS & CONCERTS



PUBLIC AREAS, PARKS & GARDENS



PORT & INTERCHANGE AREA



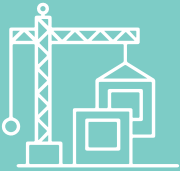
MARKETS & TERTIARY SECTOR



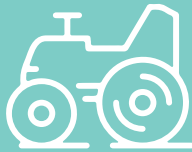
WEDDING & LUXURY EVENTS



INDUSTRY



CONSTRUCTION SITES



AGRICULTURE



SPORTING EVENTS



RELIGIOUS EVENTS & JUBILEE



REST AREAS & PARKING



TRADE FAIRS



INDEX

05	CLASSIC LINE	
	Cube portable restroom	06
	Hergo portable restroom	07
	Cube portable restroom with squatting tank	07
	Cube portable restroom with removable tank	08
	Cube portable restroom with removable tank and flush	08
	Cube changing room	09
	Cube porter lodge	09
	Cube mains-connected portable restrooms	10
	Cube shower	11
	Twin and triple portable cabins	11
	Axs wheelchair accessible portable restroom	12
	Axs changing room	13
	Axs mains-connected portable restroom	13
	Handy portable restroom	14
Handy changing room	14	
Optional Accessories	15	
16	E-LINE	
	E-Top & E-Cube	17
	E-Shower	18
	E-Top plus	18
	E-Block	19
Optional Accessories	20	
21	FREE-STANDING LINE	
	Aquapop	22
	Tenflow	22
	Ustand	23
	Border	23
24	SERVICE EQUIPMENT LINE	
	SUN – Hydraulic-driven vacuum tank units	25
	EASY – Belt-driven vacuum tank units	27
	TRK – PTO-driven vacuum tank units	28
	Comparison table	29
30	DEODORIZERS & CLEANING SOLUTIONS LINE	
	Dura blue IT	30
	Blue pearl	30
	Clean pearl	30

CLASSIC LINE

Self-Contained and Mains Connected Portable Restrooms, Cabins & Accessories

Armal portable restrooms and cabins reflect years of experience and global market feedback. They combine durability, safety, and user-friendly design.



KEY BENEFITS



EASY HANDLING

Rounded edges for safer maneuvering; single-operator mobility. Built-in floor nicks for dolly transport and truck loading. Balanced size-to-weight ratio for comfort and ease.



SPACE-SAVING PACKAGING

All parts packed on one pallet. Streamlined transport and faster assembly.



HYGIENIC FLOORING

One-piece, non-slip, impact-resistant floor. Raised rims and drainage grates for easy cleaning.



SECURE CONSTRUCTION

Concealed rivets via overlapping walls. Lift Kit-ready internal core. Integrated ventilation pipe for space efficiency.



VENTILATION & DURABILITY

Smooth, easy-clean walls with built-in vents. UV-treated roof for extreme weather resistance.

ERGONOMIC DESIGN

Reinforced door with spring coil. Occupied/vacant indicator. Wind resistance device and red safety latch. Padlock-ready hinges.

QUICK ASSEMBLY

Minimal components: one rivet type. Single-operator setup in under 2 hours for the CUBE portable restroom.

EFFICIENT GREY WATER TANK

Ergonomic seat with hygiene-focused design. Secure rear-wall attachment for stability.

VERSATILE USE

Modular interior allows for multiple configurations.

COLORS (standard – monochrome)



(*) Mix&match version with door and walls of different colors available upon request

CUBE PORTABLE RESTROOM

The Practical and Elegant Drop Tank Solution

As a true workhorse in the Portable Sanitation Industry, CUBE is a dependable, adaptable solution for restroom rental businesses, delivering consistent performance across a wide range of applications. By simply changing internal components, it can be transformed to serve different purposes. Wall urinal, coat/tool-belt hook and 3-rolls paper holder included.

SPECIFICATIONS

HEIGHT (internal – external)	2,120 – 2,330 mm
WIDTH (internal – external)	1,000 – 1,060 mm
LENGTH (internal – external)	1,000 – 1,060 mm
GREY WATER CAPACITY	210 L
WEIGHT (empty)	76 kg
MATERIAL USED	High density polyethylene with UV protection. Translucent roof and non-slip floor.

Optional Accessories

- In-unit hand wash sink
- Flush systems
- Lift kit
- Handy shower kit
- Transport Dolly
- Stackable Frame
- Soap and sanitizer dispensers
- Mirror
- Armal Key



HERGO PORTABLE RESTROOM

The Fully Contactless Sanitary Cabin

HERGO was designed to address some of the most common challenges users—especially women—face when trying to avoid contact with restroom surfaces. By prioritizing hygiene, ergonomics, and efficiency, HERGO makes using a portable restroom safer, more comfortable, and faster for everyone. Coat/tool-belt hook and 3-rolls paper holder included.



SPECIFICATIONS

HEIGHT (internal – external)	2,120 – 2,330 mm
WIDTH (internal – external)	1,000 – 1,060 mm
LENGTH (internal – external)	1,000 – 1,060 mm
GREY WATER CAPACITY	180 L
WEIGHT (empty)	81 kg
MATERIAL USED	High density polyethylene with UV protection. Translucent roof and non-slip floor.

Optional Accessories

- In-unit hand wash sink
- Recirculating flush system operated by foot or hand pump
- Lift kit
- Transport Dolly
- Stackable Frame
- Soap and sanitizer dispensers
- Mirror
- Armal Key

CUBE PORTABLE RESTROOM WITH SQUATTING TANK

The Eastern-Style Sanitary Solution

Designed for comfort and durability, this CUBE Portable Restroom provides a sturdy and user-friendly experience. Ideal for users preferring an Eastern-style restroom, this unit combines efficiency, comfort, and adaptability in one robust design. Coat/tool-belt hook and 3-rolls paper holder included.



SPECIFICATIONS

HEIGHT (internal – external)	2,120 – 2,330 mm
WIDTH (internal – external)	1,000 – 1,060 mm
LENGTH (internal – external)	1,000 – 1,060 mm
GREY WATER CAPACITY	210 L
WEIGHT (empty)	88.50 kg
MATERIAL USED	High density polyethylene with UV protection. Translucent roof and non-slip floor.

Optional Accessories

- In-unit hand wash sink
- Flush systems (waterwall fresh water flush or foot-pump recirculating flush)
- Lift kit
- Handy shower kit
- Transport Dolly
- Stackable Frame
- Soap and sanitizer dispensers
- Mirror
- Armal Key

CUBE PORTABLE RESTROOM WITH REMOVABLE TANK

The Cabin with a Portable Waste Tank

This self-contained portable restroom is ideal for hard-to-reach locations such as mountains, mining sites, enclosed areas, and skyscrapers, where vacuum service trucks cannot easily operate. This innovative solution guarantees hygiene, convenience, and operational flexibility in challenging environments. Coat/tool-belt hook and 3-rolls paper holder included.



SPECIFICATIONS

HEIGHT (internal – external)	2,120 – 2,330 mm
WIDTH (internal – external)	1,000 – 1,060 mm
LENGTH (internal – external)	1,000 – 1,060 mm
REMOVABLE TANK DIMENSIONS (HxWxL)	540 x 540 x 540 mm
GREY WATER CAPACITY	70 L
WEIGHT (empty)	83.50 kg
REMOVABLE TANK WEIGHT (empty)	7,5 kg
MATERIAL USED	High density polyethylene with UV protection. Translucent roof and OSB (Oriented Strand Board) base with non-slip PVC flooring.

Optional Accessories

- Lift kit
- Transport Dolly
- Stackable Frame
- Soap and sanitizer dispensers
- Mirror
- Armal Key

CUBE PORTABLE RESTROOM WITH REMOVABLE TANK AND FLUSH

The Cabin with a Recirculating Flush System

The CUBE Portable Restroom can be equipped with a self-contained removable grey water tank featuring a recirculating flush system for enhanced hygiene and convenience. This solution is ideal for remote locations and high-traffic areas, offering convenience, hygiene, and efficiency in one robust design. Coat/tool-belt hook and 3-rolls paper holder included.



SPECIFICATIONS

HEIGHT (internal – external)	2,120 – 2,330 mm
WIDTH (internal – external)	1,000 – 1,060 mm
LENGTH (internal – external)	1,000 – 1,060 mm
REMOVABLE TANK DIMENSIONS (HxWxL)	520 x 480 x 920 mm
GREY WATER CAPACITY	125 L
WEIGHT (empty)	87 kg
REMOVABLE TANK WEIGHT (empty)	13,50 kg
MATERIAL USED	High density polyethylene with UV protection. Translucent roof and OSB (Oriented Strand Board) base with non-slip PVC flooring.

Optional Accessories

- Lift kit
- Transport Dolly
- Stackable Frame
- Soap and sanitizer dispensers
- Mirror
- Armal Key

CUBE CHANGING ROOM

The Multi-Purpose Cabin

The CUBE Changing Room is a versatile cabin featuring a spacious, open interior that can be used as a portable changing room, a storage shed, or a secure space for tools and other items. It provides a practical solution wherever privacy is needed for changing or where additional storage is required.



SPECIFICATIONS

HEIGHT (internal – external)	2,120 – 2,330 mm
WIDTH (internal – external)	1,000 – 1,060 mm
LENGTH (internal – external)	1,000 – 1,060 mm
WEIGHT (empty)	73.50 kg
MATERIAL USED	High density polyethylene with UV protection. Translucent roof and OSB (Oriented Strand Board) base with non-slip PVC flooring.

Optional Accessories

- *Lift kit*
- *Transport Dolly*
- *Soap and sanitizer dispensers*
- *Armal Key*
- *Stackable Frame*
- *Mirror*

CUBE PORTER LODGE

The Cabin with a Panoramic View

The CUBE Porter Lodge is an innovative evolution of the CUBE Changing Room, designed to provide full 360° visibility with windows on all sides. Maintaining the key features of the original model, this cabin is ideal for use as a concierge station at building entrances, parking areas, sports facilities, and more. Coat/tool-belt hook included.



SPECIFICATIONS

HEIGHT (internal – external)	2,195 – 2,330 mm
WIDTH (internal – external)	1,000 – 1,060 mm
LENGTH (internal – external)	1,000 – 1,060 mm
WEIGHT (empty)	80 kg
WINDOWS DIMENSIONS	Side and rear windows (LxH): 850 – 400 mm Door window (LxH): 500 – 400 mm
MATERIAL USED	High density polyethylene with UV protection. Translucent roof and OSB (Oriented Strand Board) base with non-slip PVC flooring. Windows in transparent polycarbonate.
COLOR	

Optional Accessories

- *Lift kit*
- *Transport Dolly*
- *Stackable Frame*
- *Soap and sanitizer dispensers*
- *Mirror*
- *Armal Key*

CUBE MAINS-CONNECTED PORTABLE RESTROOMS

The Cabins Connected to Water and Sewage Systems

CUBE Mains-Connected Portable Restrooms offer a reliable alternative to self-contained cabins, combining the comfort of a traditional restroom with the flexibility of a portable unit. Ideal for construction sites, urban areas, permanent and long-term installations, these cabins provide a seamless sanitation solution.

Coat/tool-belt hook and 3-rolls paper holder included.



SPECIFICATIONS

	SITTING STYLE	SQUATTING STYLE
HEIGHT (internal – external)	2,120 – 2,330 mm	2,120 – 2,330 mm
WIDTH (internal – external)	1,000 – 1,060 mm	1,000 – 1,060 mm
LENGTH (internal – external)	1,000 – 1,060 mm	1,000 – 1,060 mm
OUTLET Ø	110 mm	100 mm
FRESH WATER WALL CISTERN CAPACITY	from 6 to 9 L (adjustable)	from 6 to 9 L (adjustable)
WEIGHT (empty)	81 kg	79 kg
MATERIAL USED	High density polyethylene with UV protection. Translucent roof and OSB (Oriented Strand Board) base with non-slip PVC flooring. Sanitary wares in ABS.	



Optional Accessories

- In-unit connectable hand wash sink
- Lift kit
- Transport Dolly
- Stackable Frame
- Soap and sanitizer dispensers
- Mirror
- Armal Key

CUBE SHOWER

The Hydro Portable Shower

The Armal CUBE Shower is a spacious, safe, and comfortable solution designed for effortless mobility and practicality. Ideal for large events, outdoor gatherings, agricultural sites, and workspaces, it ensures a refreshing and hygienic experience wherever needed.



SPECIFICATIONS

HEIGHT (internal – external)	2,120 – 2,330 mm
WIDTH (internal – external)	1,000 – 1,060 mm
LENGTH (internal – external)	1,000 – 1,060 mm
SHOWER TRAY FLOOR	1,000 x 1,000 mm
OUTLET Ø	1" 1/2
WEIGHT (empty)	79 kg
MATERIAL USED	High density polyethylene with UV protection. Translucent roof and OSB (Oriented Strand Board) base with non-slip PVC flooring. Shower tray in ABS.

Optional Accessories

- In-unit connectable hand wash sink
- Transport Dolly
- Mirror
- Lift kit
- Stackable Frame
- Armal Key
- Soap and sanitizer dispensers

TWIN AND TRIPLE PORTABLE CABINS

Tailored Solutions for Every Need

The TWIN and TRIPLE Cabins offer flexible, customized setups to suit your specific requirements. Thanks to the versatile design of Armal cabins, multiple units can be easily combined to create the perfect configuration for any occasion. Build your own CUBE Modular Cabin by linking two or three units together.



SPECIFICATIONS

EXTERNAL DIMENSIONS FOR TWIN CABINS (HxWxL)	2,330 x 1,060 x 2,120 mm
EXTERNAL DIMENSIONS FOR TRIPLE CABINS (HxWxL)	2,330 x 1,060 x 3,180 mm
MATERIAL USED	High density polyethylene with UV protection. Further materials: depending on cabin model.

Optional Accessories

Standard features, specifications and optional accessories depend on the interior design.


AXS WHEELCHAIR ACCESSIBLE PORTABLE RESTROOM

The Roomy Restroom for All

The redesigned Armal AXS restroom offers a more compact and efficient structure without compromising comfort. Quick and easy to assemble, this cabin is specially built to meet the needs of individuals requiring accessible facilities—such as wheelchair users, parents with strollers, or anyone who simply prefers a more spacious environment.

This smart design makes it easy and safe for everyone to enter, move around, and use the unit comfortably. Coat/tool-belt hook and 3-rolls paper holder included.

SPECIFICATIONS

HEIGHT (internal – external)	2,200 – 2,230 mm
WIDTH (internal – external)	1,600 – 1,650 mm
LENGTH (internal – external)	1,600 – 1,730 mm
GREY WATER CAPACITY	120 L approx.
WEIGHT (empty)	110 kg
MATERIAL USED	High density polyethylene with UV protection. Translucent roof and non-slip floor.
COLORS	

Optional Accessories

- AXS Hand Wash Sink
- Soap and sanitizer dispensers
- Recirculating flush system operated by hand pump
- Mirror
- AXS EasyMove Wheels
- Armal Key



AXS CHANGING ROOM

The Spacious, Versatile Cabin

Sometimes, space is everything. With the Armal AXS Changing Room, you can finally enjoy the room you need. The Armal AXS Changing Room offers extra space and versatility ideal as a changing area, storage unit, or outdoor retreat. Coat/tool-belt hook included.



SPECIFICATIONS

HEIGHT (internal – external) 2,200 – 2,230 mm

WIDTH (internal – external) 1,600 – 1,650 mm

LENGTH (internal – external) 1,600 – 1,730 mm

WEIGHT (empty) 90 kg

MATERIAL USED High density polyethylene with UV protection.
Translucent roof and non-slip floor.

COLORS

Optional Accessories

- AXS EasyMove Wheels
- Soap and sanitizer dispensers
- Armal Key
- Mirror

AXS MAINS-CONNECTED PORTABLE RESTROOM

The Spacious and Permanently Connected Cabin

AXS Mains-Connected Portable Restroom offers a practical alternative to the self-contained AXS unit. Designed for individuals with special accessibility needs—such as wheelchair users or parents with strollers—or for anyone who prefers a more spacious environment, this unit retains all the key features of the standard AXS model. Coat/tool-belt hook and 3-rolls paper holder included.



SPECIFICATIONS

HEIGHT (internal – external) 2,210 – 2,230 mm

WIDTH (internal – external) 1,510 – 1,650 mm

LENGTH (internal – external) 1,510 – 1,650 mm

OUTLET Ø 110 mm

FRESH WATER WALL CISTERN CAPACITY from 6 to 9 L (adjustable)

WEIGHT (empty) 105 kg

MATERIAL USED High density polyethylene with UV protection.
Translucent roof and non-slip floor. Sanitary wares in ABS.

COLORS

Optional Accessories

- In-unit connectable hand wash sink
- Soap and sanitizer dispensers
- Armal Key
- AXS EasyMove Wheels
- Mirror

HANDY PORTABLE RESTROOM

The Compact Mini Cabin

HANDY is Armal's Mini Self-Contained Portable Restroom, designed as the perfect solution for limited-space areas and hard-to-reach locations—whether indoors or at outdoor sites with limited access. 1-roll paper holder included.



SPECIFICATIONS

HEIGHT (internal – external)	1,890 – 1,950 mm
WIDTH (internal – external)	760 – 780 mm
LENGTH (internal – external)	930 – 950 mm
REMOVABLE TANK DIMENSIONS (HxWxL)	540 x 540 x 540 mm
GREY WATER CAPACITY	70 L approx.
WEIGHT/REMOVABLE TANK WEIGHT (empty)	55 kg / 7.5 kg
MATERIAL USED	High density polyethylene with UV protection. Translucent roof and non-slip floor.
COLORS	

Optional Accessories

- Lift kit
- Soap and sanitizer dispensers
- Mirror
- Armal Key

HANDY CHANGING ROOM

The Versatil Mini Cabin

HANDY is also available in a Changing Room version, offering all the benefits of the traditional Cube Changing Room in the most compact cabin yet. Designed for small or hard-to-reach spaces, the HANDY Changing Room provides a practical solution for storage or a convenient place to change clothes.



SPECIFICATIONS

HEIGHT (internal – external)	1,890 – 1,950 mm
WIDTH (internal – external)	760 – 780 mm
LENGTH (internal – external)	930 – 950 mm
WEIGHT (empty)	48 kg
MATERIAL USED	High density polyethylene with UV protection. Translucent roof and non-slip floor.
COLORS	

Optional Accessories

- Lift kit
- Soap and sanitizer dispensers
- Mirror
- Armal Key

CLASSIC LINE OPTIONAL ACCESSORIES

In-Unit Hand Wash Sinks

Armal offers different models of In-Unit Hand Wash Sinks, each featuring an ergonomic design, user-friendly functionality, and convenient stand-alone (foot- or hand-pump operated) or mains-connected operation.

JUNIOR HAND WASH SINK



AXS HAND WASH SINK



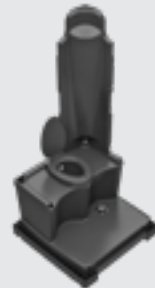
CONNECTABLE HAND WASH SINK



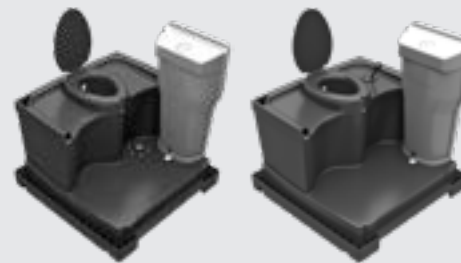
Flush Systems

Upgrade your cabin with a Flushing Bowl System that hides grey water and improves hygiene. Ideal for events or any other occasion, it's available in fresh water and recirculating options. Key features include a flap-covered bowl, odor reduction inside the restroom, internal hose layout, and easy retrofit to existing tanks. The fresh water version includes a separate rinse tank.

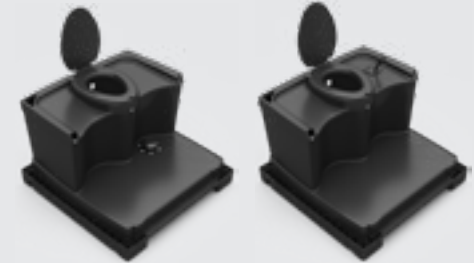
WATERWALL FRESH WATER FLUSH SYSTEM



FRESH WATER FLUSH SYSTEM (FOOT / HAND-PUMP)



RECIRCULATING FLUSH SYSTEMS (FOOT / HAND-PUMP)



LIFT KITS



HANDY SHOWER KIT



TRANSPORT DOLLY



AXS EASYMOVE WHEELS



STACKABLE FRAME



SOAP AND SANITIZER DISPENSERS



MIRROR



ARMAL KEY



E-LINE

Electronic Portable Cabins and Sanitary Modules

E-LINE is Armal's advanced range of electronic products, designed to deliver comfort, functionality, and ease of use in the portable sanitation industry. *With the same internal design and electronic mechanism, E-LINE meets the most ambitious demands of the portable sanitation market, since the line includes a single-use or a 2-station portable restroom and a shower.*



KEY BENEFITS



ELEGANT AND FUNCTIONAL DESIGN

Refined interior and exterior for a superior user experience.



INTEGRATED ELECTRONIC TECHNOLOGY

Automatic systems for efficient operation.



READY-TO-USE

No assembly required—just place and go.



HOME-LIKE COMFORT

High-quality, easy-to-clean materials, natural ventilation, and automatic LED lighting.



MAXIMUM HYGIENE

Fresh water flushing, odor control, and external grey water tank.



VERSATILE OPTIONS

Available as single-use restroom, 2-station, restroom, shower unit and changing room.

E-LINE reflects Armal's commitment to innovation, practicality, and sustainability, meeting the most ambitious demands of the market.

E-TOP / E-SHOWER / E-TOP PLUS / E-BLOCK COLORS



E-CUBE COLORS (standard – monochrome)



(*) Mix&match version with door and walls of different colors available upon request

E-TOP & E-CUBE


Premium Electronic Portable Restroom Solutions

E-TOP and E-CUBE stand out as premium portable restrooms, offering a high-quality experience far beyond standard units. Available in VIP or classic designs, their thoughtful design brings home-like comfort to portable sanitation.

Designed for ease of use, they are simple to operate, clean, transport, and handle—especially with the optional transport dolly. Perfect for remote areas where vacuum service access is limited, they require no weekly cleaning, making maintenance effortless.



SPECIFICATIONS

	E-TOP	E-CUBE
HEIGHT (internal – external)	2,120 – 2,400 mm	2,070 – 2,330 mm
WIDTH (internal – external)	1,010 – 1,060 mm	1,000 – 1,060 mm
LENGTH (internal – external)	1,010 – 1,060 mm	1,000 – 1,060 mm
WEIGHT (empty)	104 kg	97 kg
POWER SUPPLY	12V DC	12V DC
FRESH WATER PUMP (No.1)	from 10 L/min.	from 10 L/min.
GREY WATER DISCHARGE PUMP (No.1)	from 18 L/min.	from 18 L/min.
GREY WATER DISCHARGE PUMP PIPE DIAMETER	38 mm	38 mm
WATER CONSUMPTION PER EACH FLUSH	1 L for toilet bowl and 0.2 L for hand wash sink	1 L for toilet bowl and 0.2 L for hand wash sink
MATERIAL USED	Structural profiles in extruded aluminium and insulated panels in fiberglass and polystyrene. UV treated translucent polyethylene roof and OSB (Oriented Strand Board) base with a wood-effect PVC flooring. Sanitary wares in ABS.	External structure in high density polyethylene with UV protection. Translucent roof and OSB (Oriented Strand Board) base with non-slip PVC flooring. Sanitary wares in ABS.
COLORS		All colors available



Optional Accessories

- External fresh and grey water tanks
- Transport Dolly
- Stackable Frame
- Lift kit (for E-CUBE only)



E-SHOWER

Premium Electronic Portable Shower Unit

E-SHOWER offers the comfort of a home shower in a portable VIP cabin, ideal for use anywhere, from indoor spaces to beaches. E-SHOWER is the perfect solution for those who need reliable, hygienic, and comfortable shower experience in any location.



SPECIFICATIONS

HEIGHT (internal – external)	2,080 – 2,280 mm
WIDTH (internal – external)	1,000 – 1,055 mm
LENGTH (internal – external)	1,000 – 1,055 mm
WEIGHT (empty)	146 kg
POWER SUPPLY	12V DC
FRESH WATER PUMP (No. 1)	from 10 L/min.
DRAIN CONNECTED TO DRAIN PUMP WITH AUTOMATIC WATER PRESENCE SENSOR (No. 1)	from 15.5 L/min.
GREY WATER DISCHARGE PUMP PIPE DIAMETER	25 mm
MATERIAL USED	Structural profiles in extruded aluminium, with insulated panels and roof in fiberglass and polystyrene. Double-level floor and shower tray both in non-slip plastic material.
COLORS	 

Optional Accessories

- External fresh and grey water tanks



E-TOP PLUS

The Electronic Portable Restroom with Technical Room

E-TOP PLUS is the enhanced version of Armal's E-TOP cabin, designed for premium sanitation in demanding environments. E-TOP PLUS combines autonomy, durability, and ease of use, making it a top choice for high-standard portable sanitation.



SPECIFICATIONS

HEIGHT (internal – external)	2,420 mm
WIDTH (internal – external)	1,070 mm
LENGTH (internal – external)	2,120 mm
CABIN INTERNAL DIMENSIONS (HxWxL)	2,070 x 1,010 x 1,010 mm
WEIGHT (empty)	400 kg
FRESH WATER / GREY WATER (tank capacity)	500 L / 500 L
POWER SUPPLY	12V DC
FRESH WATER PUMP (No. 1)	from 10 L/min.
GREY WATER DISCHARGE PUMP (No. 1 inside cabin + No. 1 in technical room)	from 18 L/min.
GREY WATER DISCHARGE PUMP PIPE DIAMETER	38 mm
WATER CONSUMPTION PER EACH FLUSH	1 L for toilet bowl and 0.2 L for hand wash sink
MATERIAL USED	Structural profiles in extruded aluminium; insulated panels and roof in fiberglass and polystyrene. OSB base with wood-effect PVC floor. Sanitary wares in ABS.
COLORS	 

E-BLOCK

2-Station Premium Portable Restroom with Technical Room

E-BLOCK is a dual-cabin sanitary module with separate entrances, offering maximum privacy and enhanced comfort for users. E-BLOCK is the ideal solution for events, public spaces, construction sites, and more—where reducing wait times and ensuring user satisfaction are top priorities.

SPECIFICATIONS

HEIGHT (internal – external)	2,220 mm
WIDTH (internal – external)	1,150 mm
LENGTH (internal – external)	3,100 mm
INTERNAL DIMENSIONS PER RESTROOM (HxWxL)	2,070 x 1,010 x 1,010 mm
WEIGHT (empty)	500 kg
FRESH WATER / GREY WATER CAPACITY (self-contained use only)	500 L / 500 L
GREY WATER RETURN TANK CAPACITY	15 L
POWER SUPPLY (No. 2 batteries)	12V DC
FRESH WATER PUMP (No. 1 per restroom)	from 10 L/min.
GREY WATER DISCHARGE PUMP (No. 1 inside each cabin + No. 2 inside technical room)	from 18 L/min.
GREY WATER DISCHARGE PUMP PIPE DIAMETER	38 mm
WATER CONSUMPTION PER EACH FLUSH	1 L for toilet bowl and 0.2 L for hand wash sink

MATERIAL USED Structural profiles in extruded aluminium; insulated panels and roof in fiberglass and polystyrene. OSB base with wood-effect PVC floor. Sanitary wares in ABS.

COLORS 



E-LINE OPTIONAL ACCESSORIES

External Fresh And Grey Water Tanks

Arma's EXTERNAL TANK transforms single-use E-LINE cabins into fully self-contained units, combining fresh and grey water compartments in one compact solution. Once connected with the included accessories, the tank is ready to use—easy to fill, empty, and transport. It features side handles for secure grip and base slots for placing a transport dolly or loading onto a flatbed. A lockable aluminium lid protects the battery and tank caps from theft or vandalism. Level sensors inside automatically stop operation at minimum or maximum water levels. Colour-coded caps—red for fresh water, black for grey—ensure correct usage. The tank includes all necessary accessories for cabin connection and is pre-configured for a 65Ah battery.

EXTERNAL TANK



LIFT KIT



TRANSPORT DOLLY



Further
Optional
Accessories

FREE STANDING LINE

Hand Wash Stations, Urinals, and Safety Barrier

Armal's Free Standing Line includes Hand Wash Stations, Urinals, and BORDER, the HDPE Safety Barrier. All products are designed for use in schools, hospitals, events, farms, outdoor areas, and construction sites. Hand Wash Stations and Urinals provide an ideal hygiene solution anywhere, even in locations without direct water access.



KEY BENEFITS



**VERSATILE USE FOR
DIFFERENT DESTINATIONS**



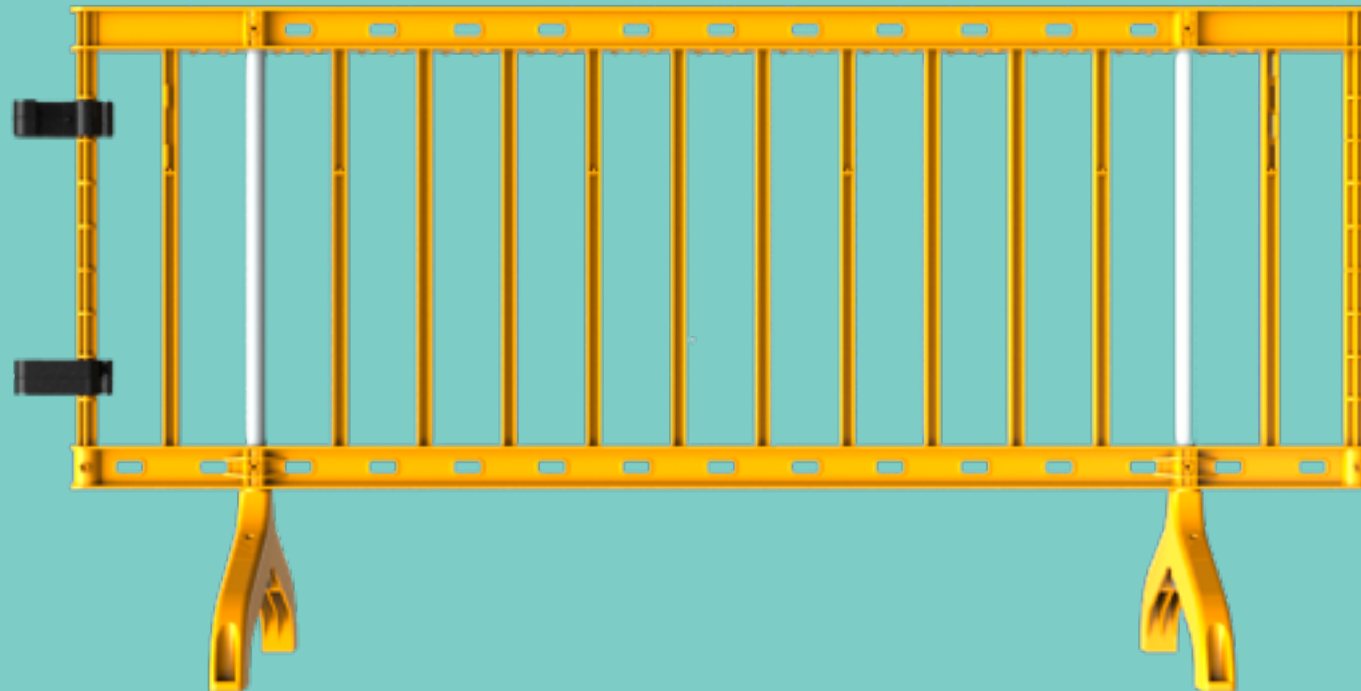
**MODERN PRODUCTION
TECHNOLOGY**



**HYGIENE
AND COMFORT**



**SAFETY
AND FLEXIBILITY**



AQUAPOP

Free Standing Hand Wash Station

AQUAPOP is Armal's innovative, self-contained solution for hand hygiene—no plumbing needed. Designed for maximum flexibility and ease of use, it's perfect for schools, events, construction sites, and more.



SPECIFICATIONS

HEIGHT	1,250 mm
WIDTH	420 mm
LENGTH	620 mm
FRESH WATER CAPACITY	50 L
GREY WATER CAPACITY	50 L
PUMP CAPACITY (per stroke)	0.09 L
WEIGHT (empty / full)	20 kg / 70 kg
SOAP AND SANITIZER DISPENSER CAPACITY	350 ml
PAPER TOWEL DISPENSER CAPACITY	200 towels
MATERIAL USED	Polyethylene. Stainless steel metal components.
COLOR	


TENFLOW

10-Station Free Standing Hand Wash Sink

TENFLOW is a robust, stainless-steel free standing sink with 10 taps—ideal for events, construction sites, parks, beaches, and any location where hand washing and hygiene are essential.



SPECIFICATIONS

HEIGHT (minimum)	1,260 mm
WIDTH	1,920 mm
LENGTH	545 mm
WEIGHT	55 kg
FRESH WATER PRESSURE	3 bar
OUTLET Ø	40 mm
MATERIAL USED	Stainless steel.
COLOR	

(*) Water and sewer connections not included in the supply

USTAND

Free Standing Urinal Unit

USTAND is a compact and efficient urinal system featuring four integrated stations, specifically designed for high-traffic environments such as events, construction sites, and public gatherings.



SPECIFICATIONS

HEIGHT	1,600 mm
DIAMETER	1,120 mm
GREY WATER CAPACITY	400 L
WEIGHT (empty / full)	40 kg / 440 kg
MATERIAL USED	Polyethylene.
COLOR	●

BORDER

Free Standing HDPE Safety Barrier

BORDER by Armal is a robust and cost-efficient safety barrier, engineered for flexible deployment in both public and private settings.



SPECIFICATIONS

HEIGHT (without feet / with feet)	800 mm / 1,100 mm
WIDTH (without feet / with feet)	55 mm / 650 mm
LENGTH (without joint / with joint / with closed feet and joint)	2,170 mm / 2,320 mm / 2,210 mm
WEIGHT	12.50 kg
MATERIAL USED	Polyethylene.
COLOR	●

SERVICE EQUIPMENT LINE

Vacuum Tank Units: Compact, Reliable, Built for Performance

Armal vacuum tank units are designed for fast, easy, and effective servicing of portable restrooms. Their compact design and high-quality components ensure reliable, worry-free operation, making them ideal for mounting on any flatbed truck and essential for any portable restroom fleet.



STANDARD TANK COLOR



KEY BENEFITS



**COMPACT, ERGONOMIC,
AND SAFE DESIGN**



**PREMIUM COMPONENTS
FROM TRUSTED BRANDS**

Battioni & Pagani, Annovi Reverberi,
Honda, Kohler, Loncin, Hydrocar.



**COMPLETE SEPARATION
OF FRESH AND GREY WATER**



OPTIMIZED LOAD BALANCE

Fresh water tank placed under grey
water tank.



**HIGH SUCTION AND WASTE
PUMP PERFORMANCE**



INTEGRATED SAFETY SYSTEMS

Siphon Valve to prevent grey water in
the vacuum pump. Ball Overflow Valve
to prevent over pumping. Safety Relief
Valve to prevent excessive pressure in
the grey water tank. Suction Stop Valve
easily accessible for operators.



EASY MONITORING & MAINTENANCE

Transparent Sight Glass Bowl for instant
grey and fresh water control.
Lightweight Fresh Water Tank for easy
handling. Manhole on grey water tank
for internal inspection and cleaning.



CE MARK

Compliance with European safety
standards.

Engine Driven Vacuum Tank Units – Compact, Efficient and Easy to Install

Armal offers two types of gasoline engine-driven vacuum tank units:

- **SUN** Units with Hydraulic Drive

- **EASY** Units with Belt Drive

SUN 1100 M1 & SUN 2000 M1

Hydraulic Units for Vehicles up to 6.0 Tons

All models are powered by an air-cooled 4-stroke OHV gasoline engine and operated via manual controls. The washing system includes a manual injector that automatically mixes sanitary concentrate or other additives for effective cleaning of portable toilets.

AVAILABLE IN TWO CONFIGURATIONS:

- **Transversal (T):** mounted crosswise to the vehicle's axis, allowing additional toilets to be loaded on the platform. Operates on both sides without repositioning the truck.
- **Longitudinal (L):** aligned along the vehicle's axis for a slimmer profile. Suction and washing stations mounted at the rear for optimal weight distribution.



SPECIFICATIONS

	SUN 1100T/L M1	SUN 2000T/L M1
HEIGHT	1,530 mm (T/L)	1,830 mm (T/L)
WIDTH	2,100 mm (T) - 1,770 mm (L)	2,100 mm (T) - 1,960 mm (L)
LENGTH	1,580 mm (T) - 2,545 mm (L)	1,880 mm (T) - 2,490 mm (L)
DIAMETER	1,000 mm (T/L)	1,300 mm (T/L)
GREY WATER CAPACITY	1,100 L (T/L)	2,000 L (T/L)
FRESH WATER CAPACITY	460 L (T/L)	580 L (T/L)
WEIGHT IN RUNNING ORDER	710 kg (T) - 670 kg (L)	880 kg (T) - 840 kg (L)
MATERIAL USED	Main tank body made of carbon steel. Fresh water tank in plastic material.	

Optional Accessories

- High pressure water pump (11 liters/min. @ 170 bar)
- Automatic hose reel with 20 meters washing hose
- 19 liters sanitary concentrate tank

SUN 1100/2000T M2 & SUN 600V M3

Hydraulic Remote Control Units for Vehicles up to 6.0 Tons

Building on the core features of the M1 models, the Armal SUN M2 and M3 vacuum tank units mark a significant advancement in design and functionality. Engineered to simplify operations, they incorporate cutting-edge technology, enhanced automation, and user-friendly controls. Key innovations include a reduced overall weight and the integration of an electronic remote control system, enabling faster and more efficient operation from a distance. Additionally, an air-oil heat exchanger prevents hydraulic oil overheating and ensures optimal operating temperature, integrated work lights for safe and efficient use in low-light conditions or at night and an hour counter displays the total operating time of the unit.

AVAILABLE IN TWO CONFIGURATIONS:

- **Transversal:** Mounted across the vehicle's axis, allowing extra portable restrooms to be loaded on the flatbed. Dual-side operation enables use from either side without repositioning the truck.
- **Mini:** Compact and lightweight, ideal for pick-ups, small trucks, or trailers. Perfect for small jobs and hard-to-reach areas.



SPECIFICATIONS

	SUN 1100T M2	SUN 2000T M2	SUN 600V M3
HEIGHT	1,530 mm	1,830 mm	1,500 mm
WIDTH	2,100 mm	2,100 mm	1,010 mm
LENGTH	1,585 mm	1,885 mm	1,650 mm
DIAMETER	1,000 mm	1,300 mm	1,000 mm (vertical)
GREY WATER CAPACITY / FRESH WATER CAPACITY	1,100 L / 460 L	2,000 L / 580 L	600 L / 200 L
WEIGHT IN RUNNING ORDER	650 kg	800 kg	500 kg
MATERIAL USED	Main tank body made of carbon steel. Fresh water tank in plastic material.		

Optional Accessories

- Deodorizing control system to spread deodorant fragrances during suction
- High pressure water pump (11 liters/min. @ 170 bar)
- Automatic hose reel with 20 meters washing hose
- Electric drive of the sanitary concentrate (M2 only)
- 19 liters sanitary concentrate tank (M2 only)
- Magnetic work light (radio-controlled – M2 only)
- Automatic suction stop system when the maximum level of grey water is reached (M3 only)
- High pressure water pump (11 liters/min. @ 170 bar – M3 only)

EASY UNITS

Belt Drive System

EASY vacuum tank units are designed as a practical and economical alternative for servicing portable restrooms. Built for durability and reliability, these entry-level units deliver strong performance without compromising safety and quality. Powered by a belt-driven combustion engine, the vacuum pump ensures high efficiency and low maintenance. The washing system uses an electric pump for simple, effective cleaning. Each unit includes one suction and one washing station, keeping the design lightweight and easy to handle. EASY units are mechanically autonomous, with the vacuum pump driven by an air-cooled 4-stroke OHV gasoline engine via belt drive and centrifugal clutch, and the washing system powered by an electric pump (8 liters/min.).

AVAILABLE IN TWO CONFIGURATIONS:

- **Transversal:** Mounted across the vehicle's axis, allowing extra portable restrooms to be loaded on the flatbed. Dual-side operation enables use from either side without repositioning the truck.
- **Mini:** Compact and lightweight, ideal for pick-ups, small trucks, or trailers. Perfect for small jobs and hard-to-reach areas.



SPECIFICATIONS

	EASY 1100T B1	EASY 2000T B1	EASY 600V B3
HEIGHT	1,530 mm	1,830 mm	1,500 mm
WIDTH	2,100 mm	2,000 mm	1,010 mm
LENGTH	1,490 mm	1,790 mm	1,650 mm
DIAMETER	1,000 mm	1,300 mm	1,000 mm (vertical)
GREY WATER CAPACITY	1,100 L	2,000 L	600 L
FRESH WATER CAPACITY	460 L	580 L	200 L
WEIGHT IN RUNNING ORDER	560 kg	730 kg	440 kg
MATERIAL USED	Main tank body made of carbon steel. Fresh water tank in plastic material.		

TRK UNITS

PTO-Driven Vacuum Tank Units Lightweight, Efficient, and Operator-Friendly

These benefits ensure faster, safer, and more economical operations, reducing operator fatigue and improving overall service quality. Designed for vehicles up to 6.0 tons. The control panel and suction/washing operations are automatically on/off when the PTO is activated/deactivated. Armal's PTO-driven vacuum tank units offer major advantages in terms of reduced weight, fuel savings, and minimal maintenance. By eliminating the need for a dedicated gasoline engine, these units are:

- **Compact and lightweight**
- **Fuel-free:** no refueling required
- **Quiet and low-vibration during operation**
- **Environmentally friendly:** lower emissions and reduced consumption
- **User-friendly:** simple operation, minimal maintenance, and lower costs

AVAILABLE IN ONE CONFIGURATION:

- **Transversal:** Mounted across the vehicle's axis, allowing extra portable restrooms to be loaded on the flatbed. Dual-side operation enables use from either side without repositioning the truck.



SPECIFICATIONS

	TRK 1100T P2	TRK 2000T P2
HEIGHT	1,530 mm	1,830 mm
WIDTH	2,100 mm	2,100 mm
LENGTH	1,480 mm	1,780 mm
DIAMETER	1,000 mm	1,300 mm
GREY WATER CAPACITY / FRESH WATER CAPACITY	1,100 L / 460 L	2,000 L / 580 L
WEIGHT IN RUNNING ORDER	580 kg	620 kg
MATERIAL USED	Main tank body made of carbon steel. Fresh water tank in plastic material.	

Optional Accessories

- *Deodorizing control system to spread deodorant fragrances during suction*
- *High pressure water pump (11 liters/min. @ 170 bar)*
- *Automatic hose reel with 20 meters washing hose*
- *Electric drive of the sanitary concentrate*
- *19 liters sanitary concentrate tank*
- *Magnetic work light (radio-controlled)*

VACUUM TANK UNITS COMPARATIVE TABLE

Armal

	SUN 1000T M1 SUN 2000T M1	SUN 1000T M2 SUN 2000T M2	SUN 1000L M1 SUN 2000L M1	SUN 600V M3	EASY 1100T B1 EASY 2000T B1	EASY 600V B3	TRK 1100T P2 TRK 2000T P2
ENGINE	✓	✓	✓	✓	✓	✓	
PTO (POWER TAKE - OFF)							✓
HIGH PRESSURE HYDRAULIC VACUUM PUMP	✓	✓	✓	✓			✓
LOW PRESSURE / BELT DRIVE SYSTEM					✓	✓	
REMOTE CONTROL SYSTEM		✓		✓			✓
MECHANICAL OPERATIONS	✓		✓		✓	✓	

DEODORIZERS & CLEANING SOLUTIONS LINE

Complete Hygiene Care for Portable Restrooms

Armal offers everything needed to service portable restrooms, including high-quality DEODORIZERS and CLEANING PRODUCTS. In addition to manufacturing polyethylene restrooms and other innovative mobile solutions, Armal provides both liquid and single-dose care products designed to keep restrooms fresh and hygienic over time.

DURA BLUE IT

ODOR CONTROL & WASTE BREAKDOWN FOR PORTABLE RESTROOMS

DURA BLUE IT is a non-formaldehyde liquid concentrate designed for grey water tanks in portable restrooms and Armal vacuum units. It speeds up waste and paper breakdown while effectively controlling odors.

- **Fragrance:** Blueberry
- **Recommended Dosage:** Dilute 1 liter in 1,000 liters of water; pour 15 liters of solution into Armal CUBE drop tank model. Adjust dosage based on temperature, restroom model, and service frequency
- **Sizes Available:** 19 / 208 / 1,041 liters



BLUE PEARL

FAST WASTE BREAKDOWN & ODOR CONTROL

Armal BLUE PEARL offers quick, effective servicing for portable restrooms with single-use packets. Just add 1–2 packets to the grey water tank to eliminate bacteria and release a long-lasting bubble gum scent.

- **Fragrance:** Bubble gum
- **Recommended Dosage:** 1 packet per service; 2 for high-traffic events
- **Pack Size:** 100 single-use packets



CLEAN PEARL

DEGREASING & SANITIZING SPRAY

Armal CLEAN PEARL is a single-use cleaning solution for portable restrooms. Mix with water and spray on interior and exterior surfaces to degrease, sanitize, and eliminate bad odors with a fresh scent.

- **Fragrance:** Fruit mix, bubble gum
- **Recommended Dosage:** 1 packet in 15 liters of water and spray the mix with a nebulizer on the portable restroom's surfaces in and out
- **Pack Size:** 100 single-use packets



Arma



Armal

Armal S.p.A.

Via Fiorentina, 109 - 50052 Certaldo (FI) - ITALY

Phone +39 0571 66 53 05 - Fax +39 0571 65 12 60

armal@armal.biz

www.armal.biz



follow us on

